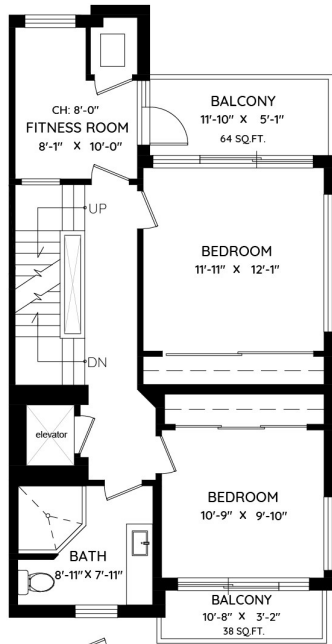
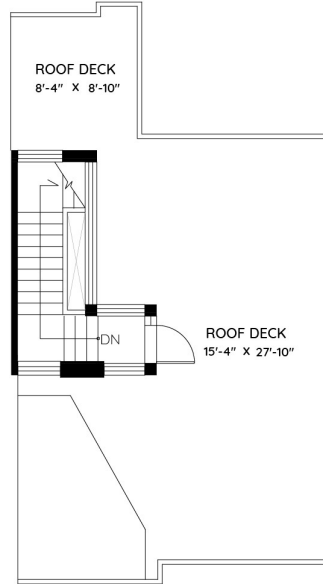


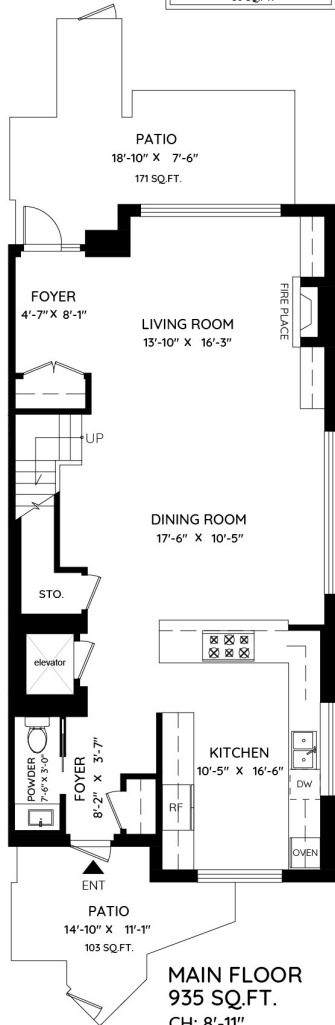
TH18 - 1281 WEST CORDOVA STREET VANCOUVER, BC



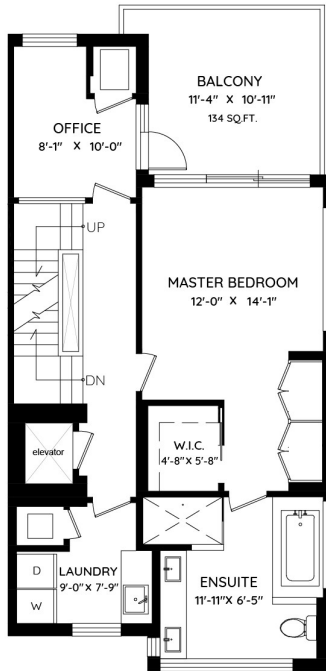
TOP FLOOR
814 SQ.FT.
CH: 8'-11"



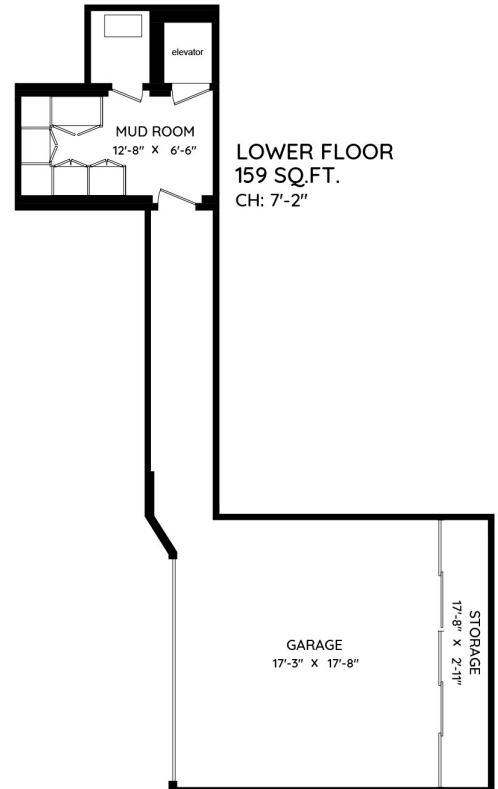
MAIN	935 SQ.FT.
UPPER	771 SQ.FT.
TOP	814 SQ.FT.
LOWER	159 SQ.FT.
TOTAL	2,679 SQ.FT.
GARAGE	434 SQ.FT.
STORAGE	65 SQ.FT.
ROOF DECK	497 SQ.FT.
BALCONY	236 SQ.FT.
PATIO	274 SQ.FT.
TOTAL	1,506 SQ.FT.



MAIN FLOOR
935 SQ.FT.
CH: 8'-11"



UPPER FLOOR
771 SQ.FT.
CH: 8'-11"



LOWER FLOOR
159 SQ.FT.
CH: 7'-2"



0 ft 3 ft 5 ft 10 ft

The floor plan and the measurements are approximate and are to be used for advertising usage only.
Not suitable for architectural or construction. E&O Insured