

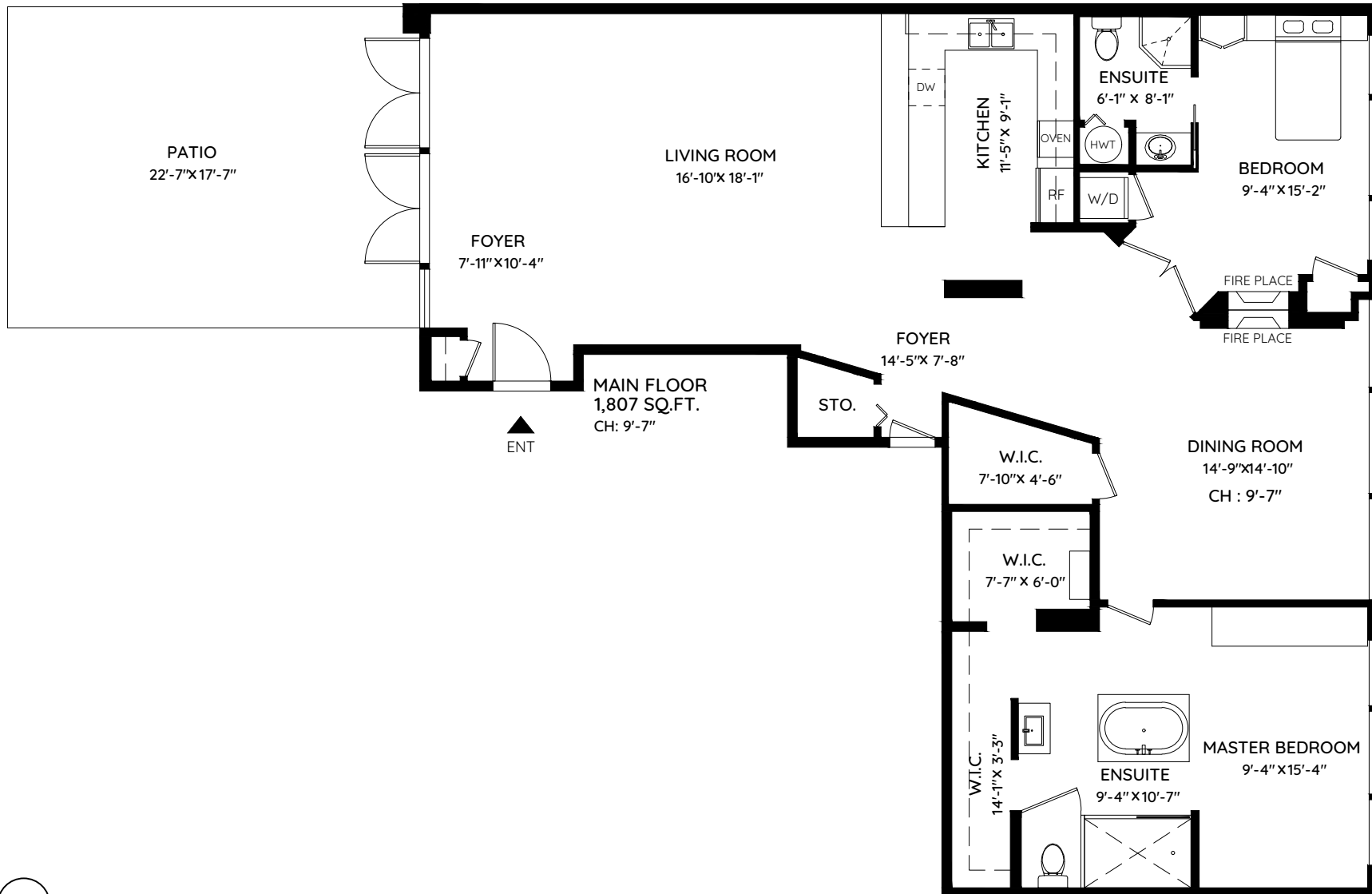
9 - 1245 HOMER STREET

VANCOUVER, BC

TOTAL AREA 1,807 SQ.FT.

PATIO 397 SQ.FT.

CEILING HEIGHT 9'-7"



The floor plan and the measurements are approximate and are to be used for advertising usage only.
Not suitable for architectural or construction. E&OE. © 2019 KEYPLAN Measuring Inc.

keyplan
plan your space