

MALCOLM HASMAN

ANGELL HASMAN & ASSOCIATES REALTY LTD.
 1550 MARINE DRIVE
 WEST VANCOUVER, B.C.
 V7V 1H8
 TEL: 604-921-1188
 FAX: 604-921-1199



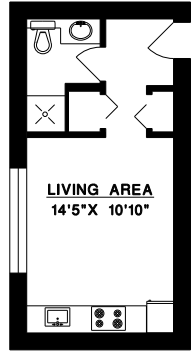
939 KING GEORGES WAY
 WEST VANCOUVER

MAIN FLOOR 3,587 SQ.FT.
 UPPER FLOOR 991 SQ.FT.
 *LOWER FLOOR 951 SQ.FT.

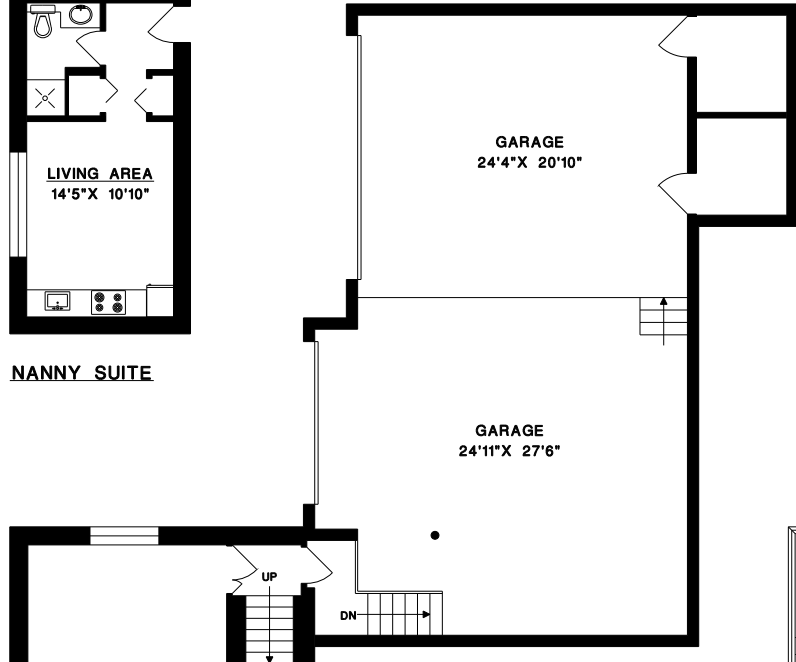
TOTAL 5,529 SQ.FT.

GARAGE 1,423 SQ.FT.
 GUEST SUITE 442 SQ.FT.
 NANNY SUITE 343 SQ.FT.

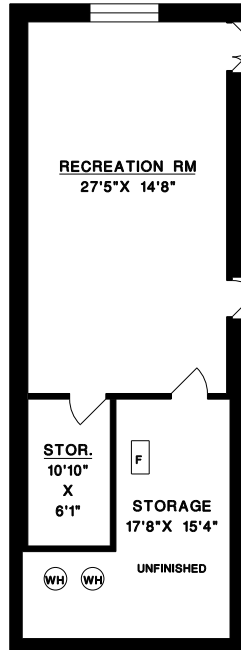
*INCLUDES UNFINISHED AREA



NANNY SUITE

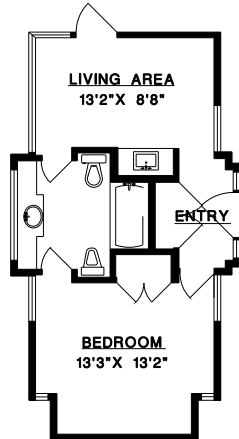


LOWER FLOOR

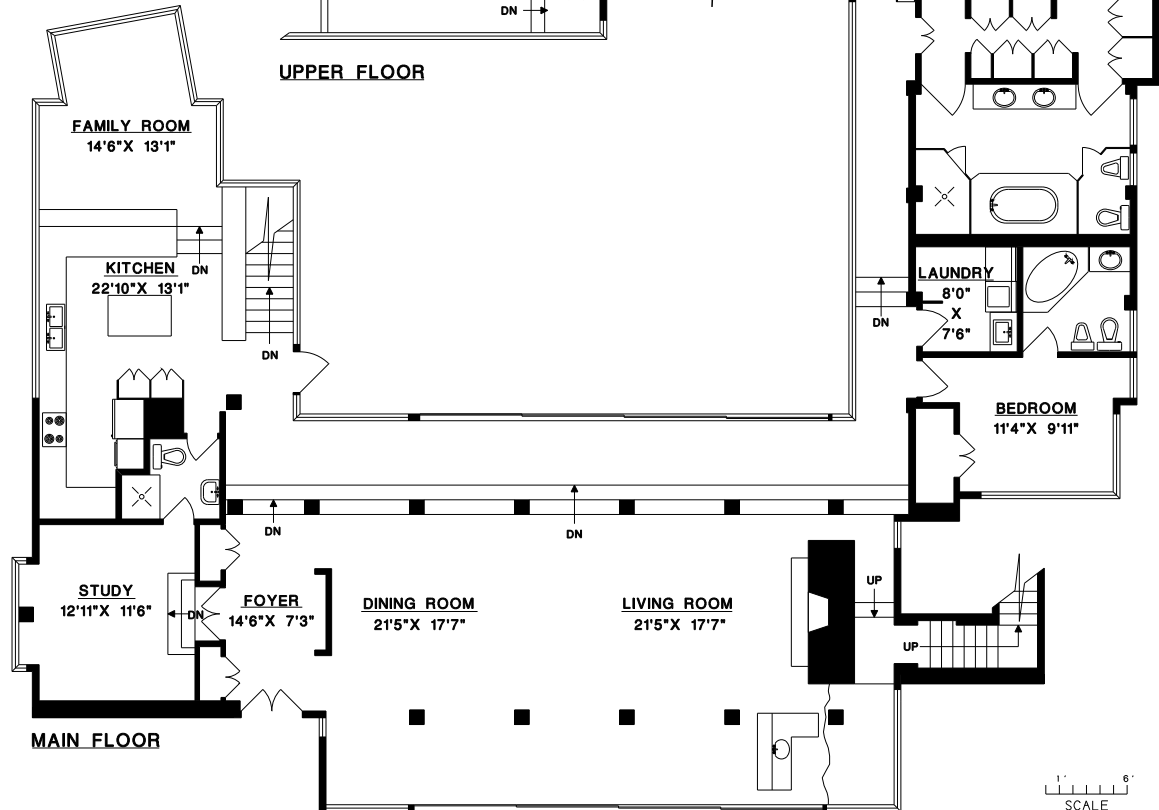


RECREATION RM
 27'5"X 14'8"

STOR.
 10'10" X 6'1"
 STORAGE
 17'8"X 15'4"
 UNFINISHED

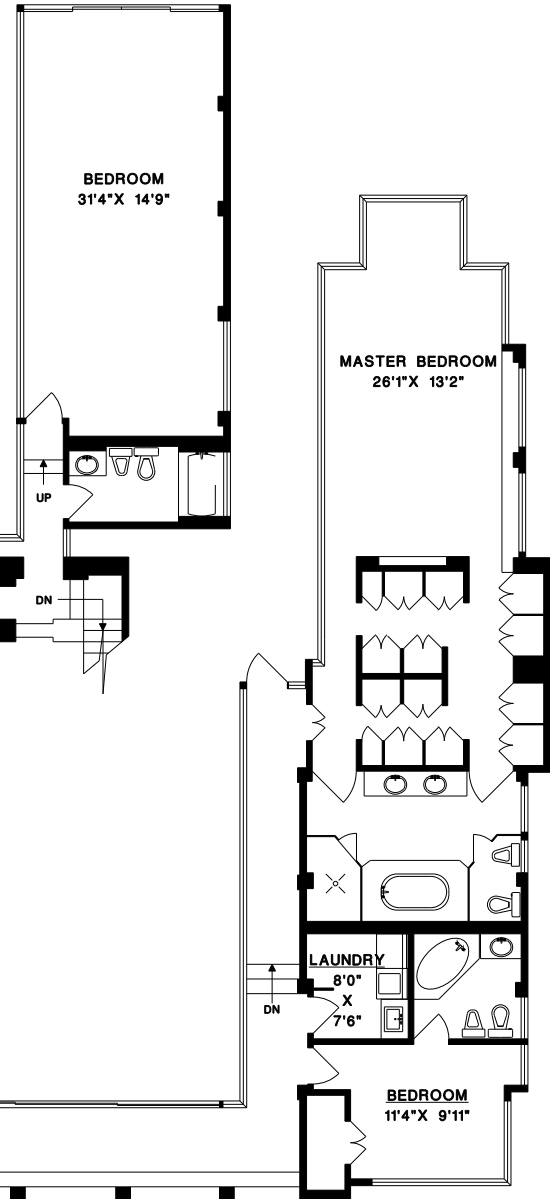


GUEST SUITE



MAIN FLOOR

UPPER FLOOR



BEDROOM
 31'4"X 14'9"

DEN
 15'2"X 13'2"

FAMILY ROOM
 14'6"X 13'1"

KITCHEN
 22'10"X 13'1"

STUDY
 12'11"X 11'6"

FOYER
 14'6"X 7'3"

DINING ROOM
 21'5"X 17'7"

LIVING ROOM
 21'5"X 17'7"

LAUNDRY
 8'0" X 7'6"

BEDROOM
 11'4"X 9'11"

MASTER BEDROOM
 26'1"X 13'2"