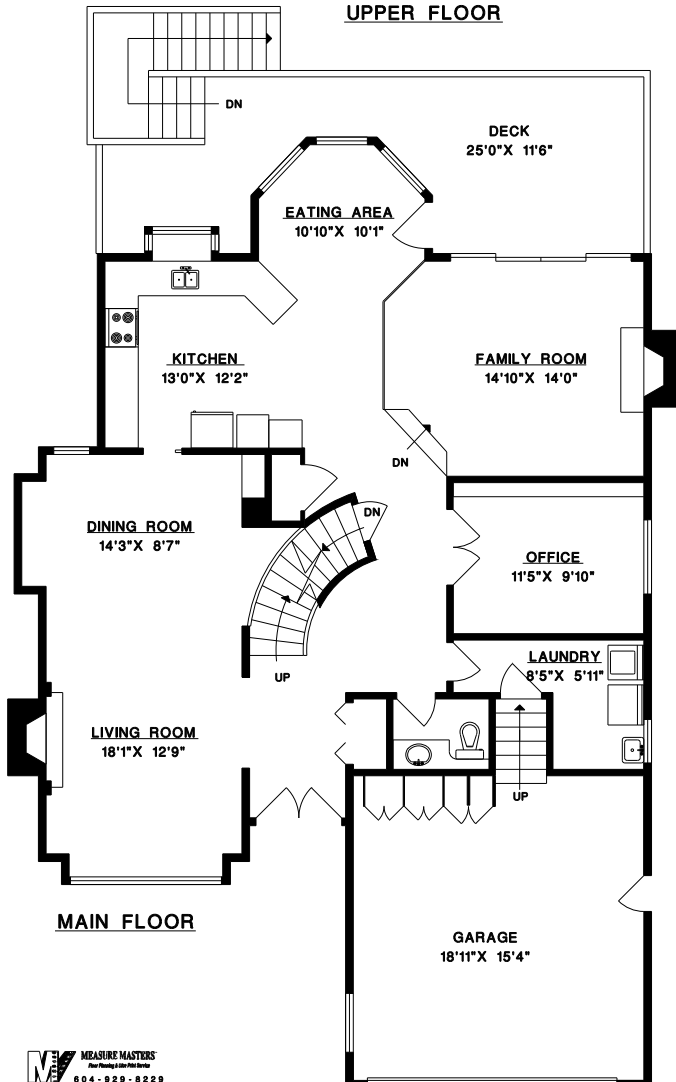
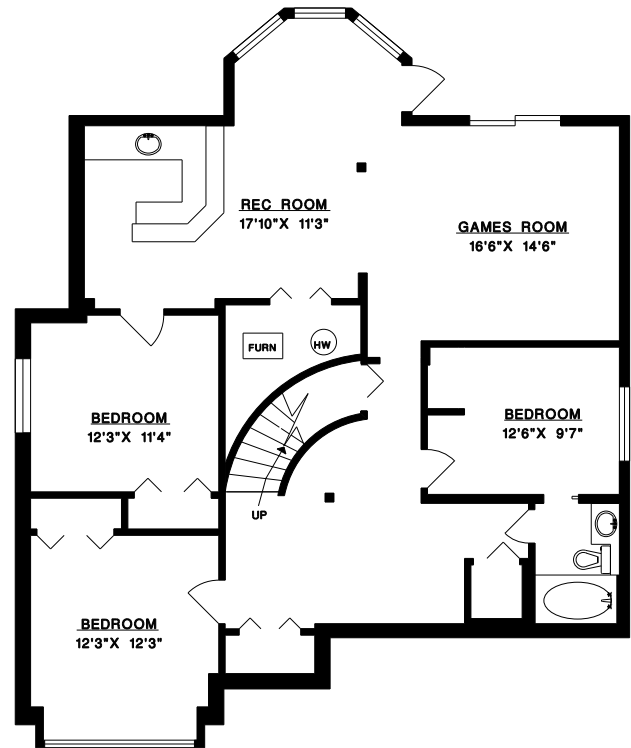


**UPPER FLOOR**



**MAIN FLOOR**



**LOWER FLOOR**

# MALCOLM HASMAN

ANGELL HASMAN & ASSOCIATES REALTY LTD.  
1550 MARINE DRIVE  
WEST VANCOUVER, B.C.  
V7V 1H8  
TEL: 604-921-1188  
FAX: 604-921-1189



**382 DOLLARTON HWY  
NORTH VANCOUVER**

MAIN FLOOR 1,496 SQ.FT.  
UPPER FLOOR 1,220 SQ.FT.  
LOWER FLOOR 1,505 SQ.FT.

**TOTAL 4,221 SQ.FT.**

DECK 320 SQ.FT.  
GARAGE 420 SQ.FT.