

Angell Hasman & Associates
(The Angell Group)
1555 Marine Drive
West Vancouver, B.C.
Tel: 604-921-1188
Fax: 604-921-1199

PROJECT:

3010
Rosebery Avenue

DRAWING:

All Floors

CONSULTANT:

pointsourcemedia

www.pointsourcemedia.ca
604-839-8889

DATE: 21/01/08

SCALE: As shown

DRAWN: Galen Low

CHECKED:

COMMENTS:

REVISIONS:

NO.	DATE	DETAILS

DRAWING NO.:

0000104

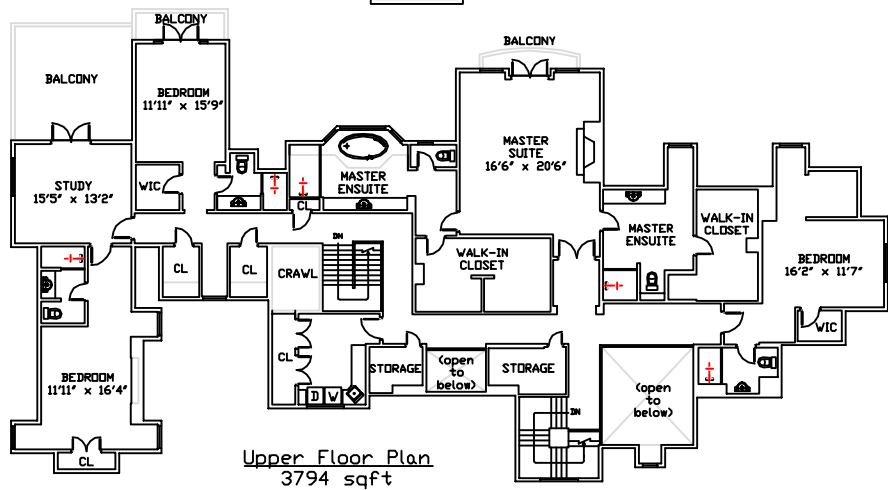
SHEET:

1 of 1

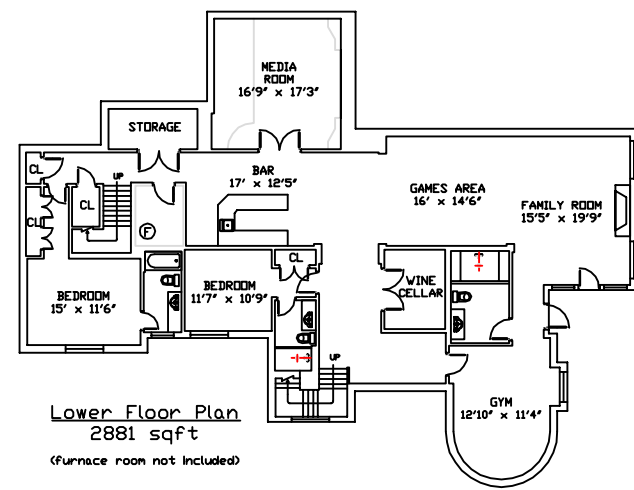


Finished Area
Above Grade: 7070 sqft
Below Grade: 2881 sqft
Unfinished Area
Above Grade: 54 sqft
Below Grade: 65 sqft

Main Floor Plan
3276 sqft



Upper Floor Plan
3794 sqft
(areas with ceilings lower than 5' not included)



Lower Floor Plan
2881 sqft
(furnace room not included)

TOTAL FINISHED AREA
9951 sqft

This property was measured using the ANSI Z765 standard. Total floor area calculations are based on measurements taken from the outside surface of the exterior walls. Walls that could not be measured directly have been extrapolated from interior measurements. Calculations do not include porches, patios, decks, garages, carports, mechanical and electrical rooms, crawl spaces, and any other unfinished areas. Individual room dimensions have been calculated based on the largest rectangular space accommodated by the interior surfaces of those walls. For more information, please consult the ANSI Z765 standard. All measurements are subject to errors not exceeding 2.0%.