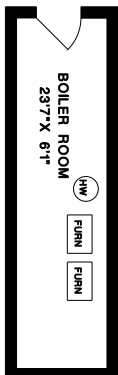


# MALCOLM HASMAN

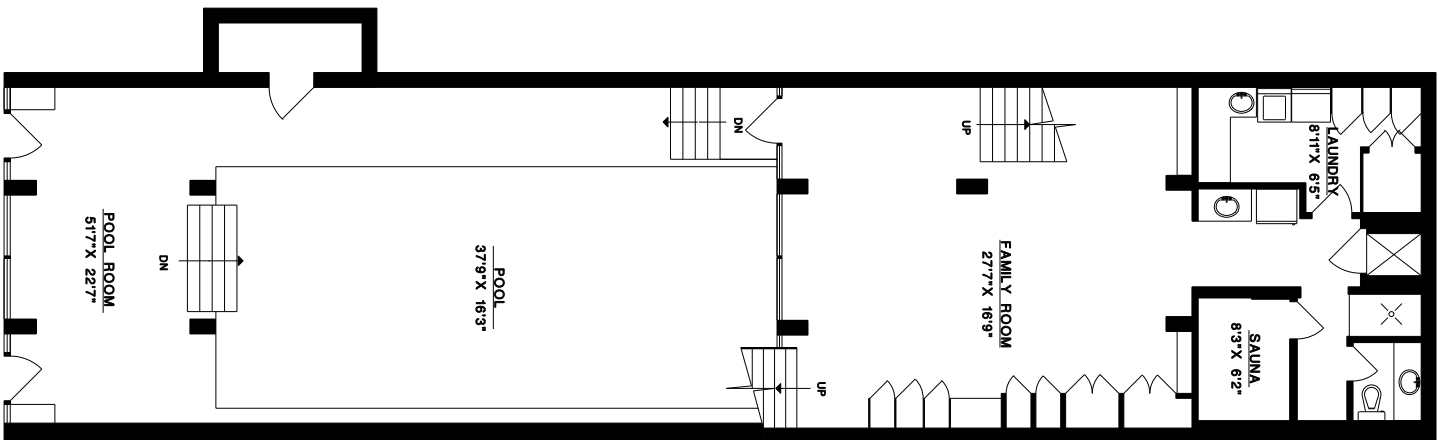
ANGEL HASMAN & ASSOCIATES REALTY LTD.  
1550 MARINE DRIVE  
WEST VANCOUVER, B.C.

V/T: H8  
TEL: 604-921-1088  
FAX: 604-921-1999

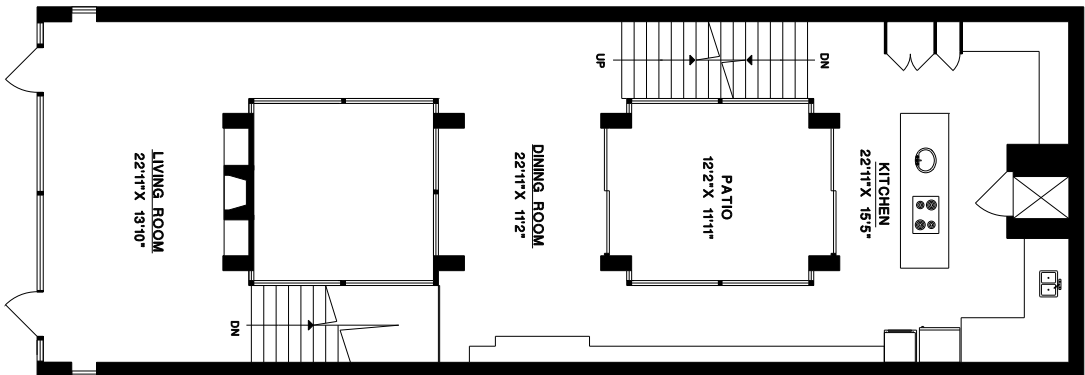


2724 PANORAMA DRIVE  
NORTH VANCOUVER

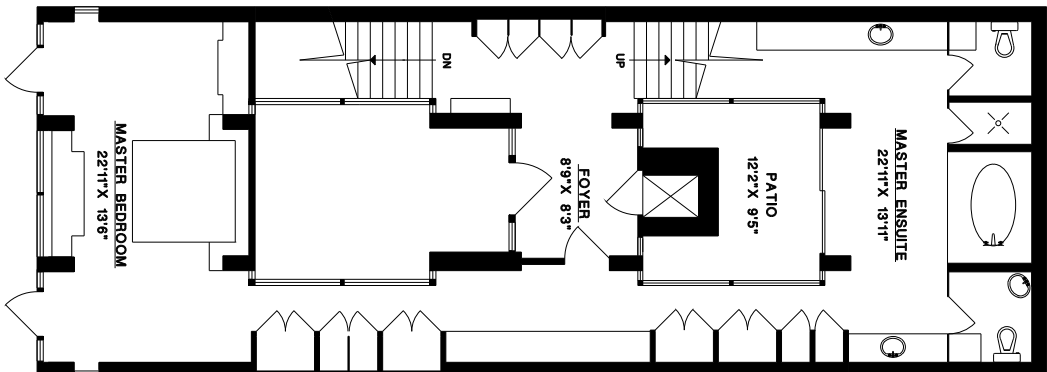
MAIN FLOOR 1,443 SQ.FT.  
TOP FLOOR 731 SQ.FT.  
UPPER FLOOR 1,398 SQ.FT.  
LOWER FLOOR 2,451 SQ.FT.  
TOTAL 6,023 SQ.FT.  
PATIOS 280 SQ.FT.  
BOILER ROOM 191 SQ.FT.



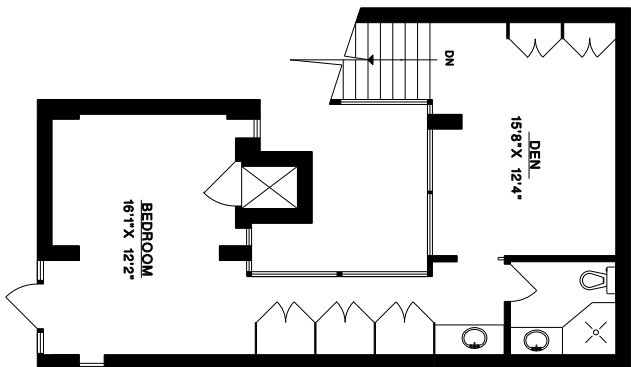
LOWER FLOOR



MAIN FLOOR



UPPER FLOOR



TOP FLOOR



DATE: JUN09  
FILE: 108-91

