

**2660 PANORAMA DRIVE
NORTH VANCOUVER**

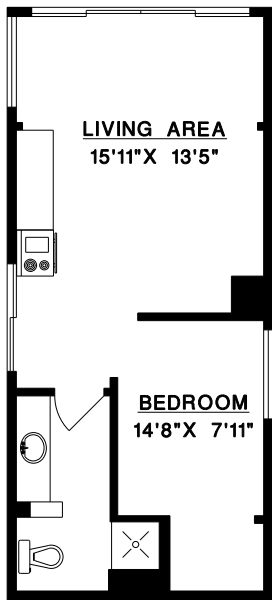
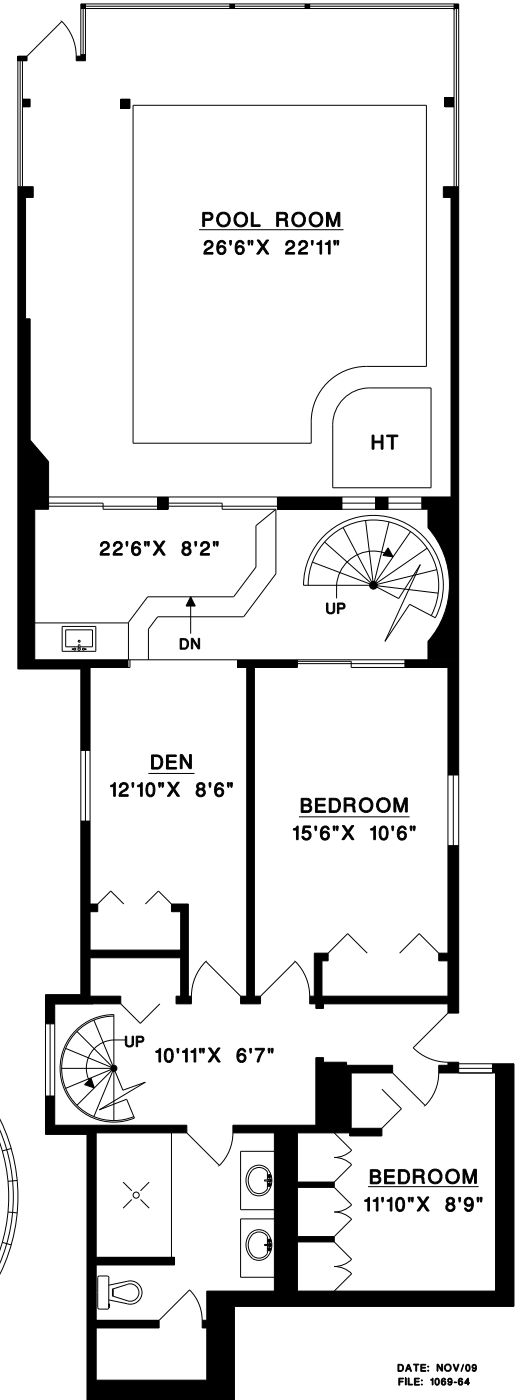
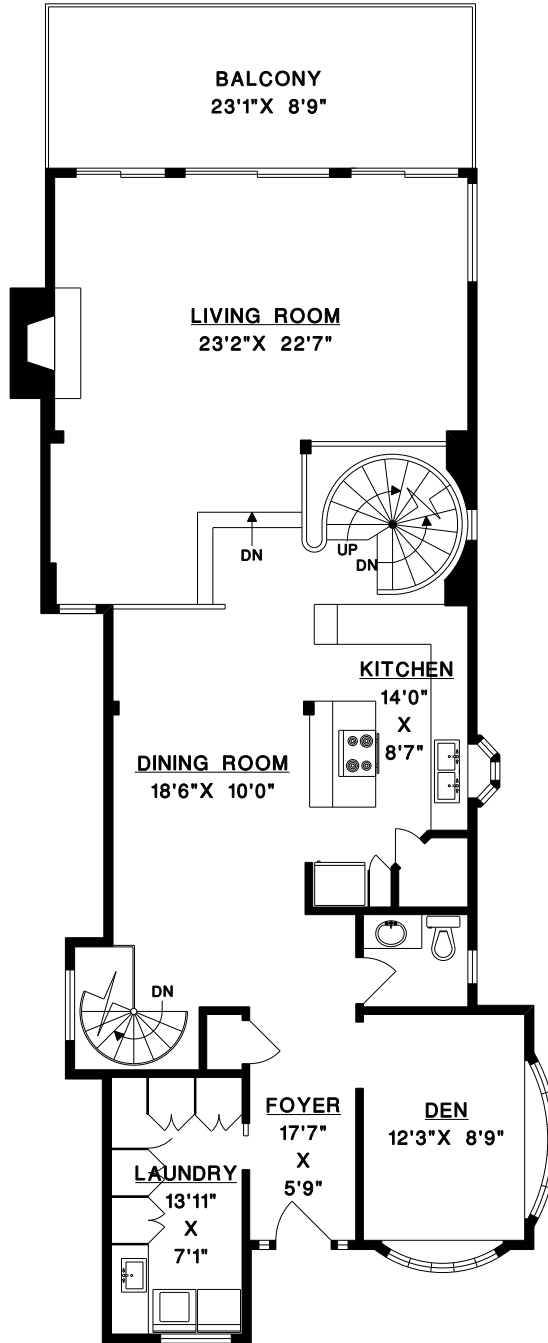
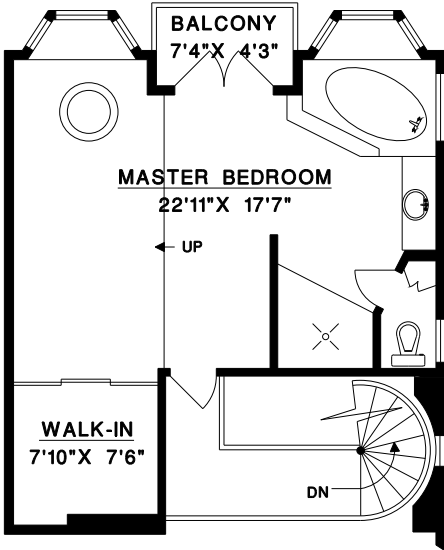
MAIN FLOOR 1,370 SQ.FT.
UPPER FLOOR 598 SQ.FT.
LOWER FLOOR 1,654 SQ.FT.

TOTAL 3,622 SQ.FT.

BOAT HOUSE 464 SQ.FT.
BALCONIES 244 SQ.FT.

MALCOLM HASMAN

ANGELL HASMAN & ASSOCIATES REALTY LTD.
1550 MARINE DRIVE
WEST VANCOUVER, B.C.
V7V 1H8
TEL: 604-921-1188
FAX: 604-921-1199



DATE: NOV/09
FILE: 1089-84

MEASURE MASTERS
Precision • Accuracy • Reliability
604-929-8229

